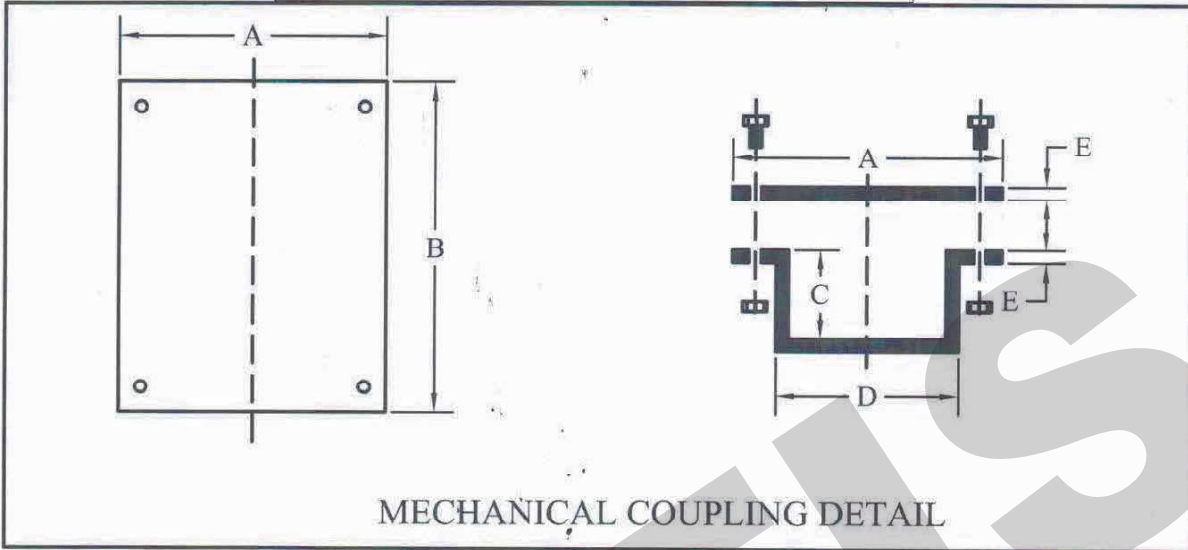


APPROVED BY THE CITY OF LOS ANGELES  
BUREAU OF ENGINEERING/PUBLIC WORKS



PRODUCT SPECIFICATION - MECHANICAL COUPLING

PRODUCT LIST			PRODUCT DIMENSIONS				
ROUND EQUIV.	DIMENSIONS	MODEL	A	B	C	D	E
4"	3"x5"	CP-SPC05-2	4"	8-5/8"	3-1/8"	5-5/8"	10 GA.
5"	3"x8"	CP-SPC08-2	4"	11-5/8"	3-3/8"	8-5/8"	10 GA.
6"	3"x12"	CP-SPC12-2	4"	15-5/8"	3-3/8"	12-5/8"	10 GA.
8"	4"x14"	CP-SPC14-2	4"	17-5/8"	4-3/8"	14-5/8"	10 GA.
8"	3"x17"	CP-SPC17-2	4"	20-5/8"	3-3/8"	17-5/8"	10 GA.
10"	3"x27"	CP-SPC27-2	4"	30-5/8"	3-3/8"	27-5/8"	10 GA.
10"	4"x22"	CP-SPC22-2	4"	25-5/8"	4-3/8"	22-5/8"	10 GA.
12"	4"x28"	CP-SPC28-2	4"	31-5/8"	4-3/8"	28-5/8"	10 GA.

MATERIAL: 10 GAUGE GALVANIZED A653 G90, MEETS ASTM A-653. TENSILE STRENGTH 50,000. YIELD 36,000. ALL WELDS WILL BE SPRAYED, ROLLED OR BRUSHED WITH GALVANIZED #95 COATING. RECTANGULAR CONNECTION: MASTIC (MUST MEET OR EXCEED ASTM D-4586), CAULKING, EPOXY OR OTHER CITY OF LOS ANGELES APPROVED METHOD. ROUND CONNECTION: CAST IRON/ PLASTIC PIPE CONNECTION USE CAST IRON OR PLASTIC TO STEEL COUPLINGS. CONTACT BUREAU OF CONTRACT ADMINISTRATION MATERIAL CONTROL SECTION AT (213) 485-5080 FOR FABRICATION INSPECTION



9421 Monterey Ave. Bellflower, CA. 90706 - Office (714)903-2468