



E-Z MIX INC.

SPEC CONCRETE 4500 PSI

PMP
 PRE-MIX PRODUCTS

HIGH STRENGTH CONCRETE MIX

PRODUCT

PMP Spec Concrete Mix 4500 PSI

DESCRIPTION

PMP® Spec Concrete Mix 4500 PSI is a high strength concrete mix ideal for both structural and non structural applications over 2 inch (50 mm) thick.

USES

- Foundation walls
- Sidewalks
- Footing
- Patios
- Steps
- Driveways

COVERAGE

One 90 lbs. (40.8 kg) bag will yield approximately 0.66 cubic feet.

One 60 lbs. (27.2 kg) bag will yield approximately 0.45 cubic feet.

To determine the number of bags needed: Multiply length (feet) X Width (feet) X Depth (inches) and divide by 12. Then divide by the yield of the bag above.

TECHNICAL DATA

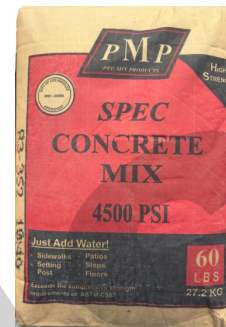
PMP® Spec Concrete Mix 4500 PSI exceeds the compressive strength requirements of ASTM C387. PMP® Spec Concrete Mix 4500 PSI exceeds 4,500 psi (28 MPa) at 2-3" (50-75 mm) slump, at 28 days.

INSTALLATION**PREPARATION**

Stake out the area where the concrete will be placed and remove sod or soil to the desired depth. Nail and stake forms securely in place. Tamp and compact the sub-base until firm. For improved drainage place several inches of gravel into the excavated area.

MIXING

- Empty content into a wheelbarrow or mortar pan forming a crater into the center for the addition of clean, portable water. For large projects use a mechanical mixer.
- Add approximately 4 quarts (3.8 L) for a 90 lbs. bag and approximately 2.5 quarts (2.4 L) for a 60 lbs. bag of clean water or enough to achieve a workable mix.

**FLAT WORK**

- Place forms in the desired area assuring that they are level, square, and all corners sealed so no premixed material can escape once placed.
- Place the concrete into the forms to full depth.
- Consolidate by moving into corners and low areas to assure there are no voids.
- Using a straight edge (a 2 x 4 works well) level the surface of the concrete using back and forth sawing motion.
- Use a wood float to remove surface imperfections.

POST AND POLES

- Dig hole to required depth and diameter (depth should be 1/3 the length of the post or pole and hole should be 3 times the diameter of the pole or post width).
- Center and plumb the post
- Fill hole with mixer material and consolidate.
- Slope mix to allow water to drain away.

FINISHING

- Allow mix to stiffen until thumb print hard and the surface water has evaporated. Stiffening time will vary with weather conditions.
- Use a steel trowel to put a smooth level surface on the concrete. Applying a light broom finish will aid with traction and remove any imperfections left from the trowel
- Finish with an edging tool.

CURING:

- Curing means maintaining proper moisture and temperature. The material must be kept continuously moist for several days.
- Covering with plastic is a practical way to help retain moisture. Place plastic after concrete has set.

EZMIXINC.COM 909-874-7686



E-Z MIX INC.

SPEC CONCRETE 4500 PSI



HIGH STRENGTH CONCRETE MIX

- If surface appears dry, remove plastic, moisten and replace plastic.
- Keep from freezing and rain for at least 24 hours.
- New concrete can be opened to foot traffic in 24 hours and vehicular traffic in 72 hours.

PRECAUTIONS

Air, mix and substrate temperatures should be between 40°F (4°C) and 90°F (32°C) with no rain in the forecast within 24 hours of application. For application outside this range of temperatures and conditions, contact E-Z Mix Technical Service.

CAUTION

Prolonged exposure to dust may cause delayed lung disease. Eliminate exposure to dust. Use NIOSH approved mask for silica dust. Freshly mixed material may cause skin irritation. Avoid direct contact when possible and wash exposed skin areas promptly with water and get prompt medical attention. See Safety Data Sheet.

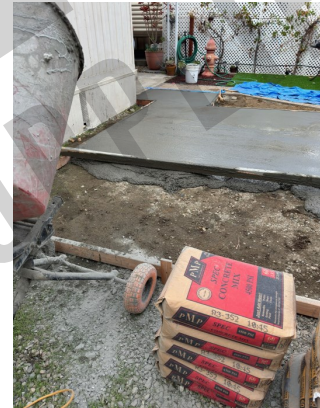
⚠ WARNING: This product can expose you to chemicals including Chromium (hexavalent compounds), which are known to the state of California to cause cancer and birth defects or other reproductive harm. For more information go to

LIMITED WARRANTY

E-Z MIX warrants to each Purchaser of its Products that the Products will conform to the physical and mechanical properties provided in the Letter of Certification or Specification Sheet issued by E-Z MIX for or applicable to the Products at the time of sale. E-Z MIX does not provide engineering or other professional advisory services regarding the use or installation of the Products. It is the responsibility of the purchaser to obtain such services from licensed professionals.

THIS WARRANTY IS THE ONLY WARRANTY APPLICABLE TO THE PRODUCTS AND IS MADE IN LIEU OF ANY OTHER WARRANTY, EXPRESS OR IMPLIED, INCLUDING, BUT NOT LIMITED TO, IMPLIED WARRANTIES OF MERCHANTABILITY AND FITNESS FOR A PARTICULAR PURPOSE, ALL OF WHICH ARE HEREBY DISCLAIMED.

The sole remedy of Purchaser, and the sole obligation of E-Z MIX, for breach of the foregoing warranty shall be to replace nonconforming Products or, at the option of E-Z MIX, to refund the purchase price. In no event shall E-Z MIX be liable for any other or future damages, whether special, incidental or consequential, including, without limitation, delay, personal injury, property damage, work stoppage, loss of profits, loss of use of equipment, loss of or damage to work ("Work") into which the Product is incorporated, or labor or other expenses associated with removing the Product from or replacing the Product in the Work.



EZMIXINC.COM 909-874-7686