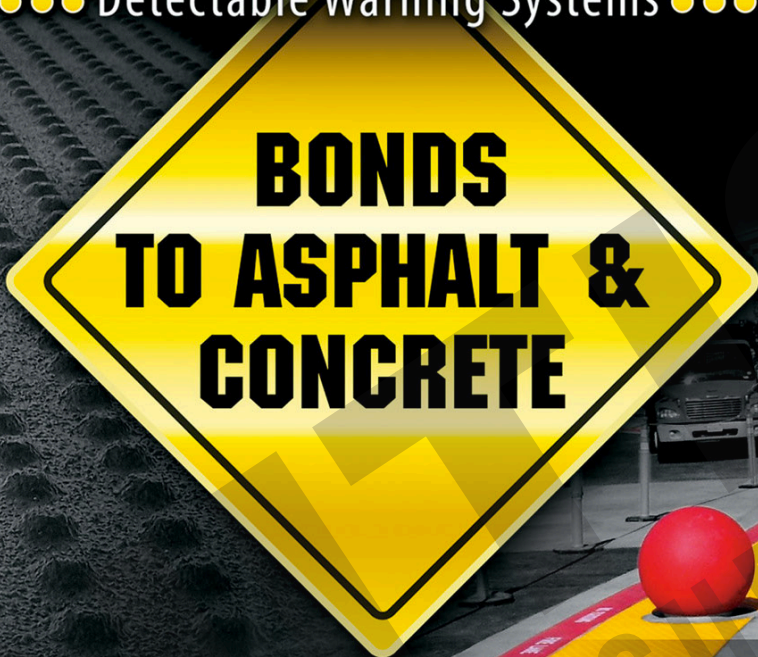


Safety Step TD™

Detectable Warning Systems



WWW.SAFETYSTEPTD.COM

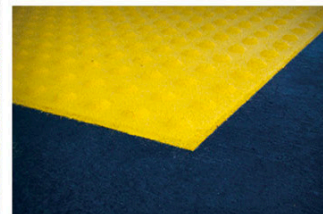
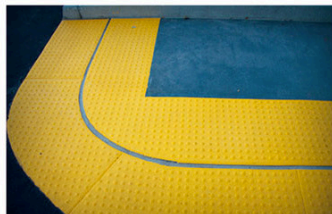
Increase your ability

FLEXIBILITY

USABILITY

VISIBILITY

PROFITABILITY



Safety Step TD™

●●● Detectable Warning Systems ●●●

DESCRIPTION:

Truncated-dome tactile warning pattern for pavement.

USES:

Use either the SSTD-Traditional Mat System or the SSTD Ramp Up Mat where ADA, transit, or building codes require a tactile warning surface, such as at transit boarding platforms, curb ramps, and hazardous vehicular areas. The system may be installed directly on concrete or asphalt.

PRODUCT ATTRIBUTES:

The system consists of a patterned mat plus adhesives and coatings to form an ADA compliant, high-contrast, breathable surface. SSTD easily handles curves, pavement joints, and concrete-asphalt transitions

APPLICABLE STANDARDS:

SSTD is compatible with: ADA Accessibility Guidelines (ADAAG) Section 4.29.2
California Division of the State Architect (DSA) IR 11B-2, IR 11B-3, and IR 11B-4

PERFORMANCE CRITERIA:

Abrasion Test, ASTM D1242: Thickness loss 1.5%
Accelerated Weathering, 1500 Hours QUV: No Effect on Film Integrity
Bond Strength, ASTM C297: Concrete, 290 PSI; Plywood, 155 PSI
Bond Strength after Accelerated Aging, ASTM D756: 249 PSI
Compressive Strength, ASTM C 109: 5690 PSI
Concentrated Load, ICC-ES AC308: No apparent damage. Average penetration, 0.031; Residual, 0.020.
Fire Test, ASTM E108: Class A Flexural Strength, 1835 PSI
Impact Strength: 22 in/lbs.
Impact Test, ASTM D 3220:
No Cracking Percolation Test, AC39 Sec.IV G: 0.25 inches
Tensile Strength, ASTM C 190: 85:855 PSI
Water Absorption, ASTM D570: 6.5% Water Pondering, ASTM E96: 0.0102 grams/24 hours
Water Vapor Transmission, ASTM E96: 0.958 perm

HANDLING:

Protect adhesives, mat & coatings from freezing prior to application.

WARRANTY:

Five -year limited material warranty.

LIMITATIONS:

Do not apply in temperatures below 55° F (13° C). Weather conditions and climate may vary cure time of applicable surfaces, but a 7 day minimum cure time is required for new concrete prior to installation. Please contact our office for additional questions on all other cure times on concrete and additional surface.

SAFETY PRECAUTIONS:

Ventilation: Local exhaust and mechanical ventilation are recommended.
Respiratory Protection: None required for normal use of product.
Protective Gloves: Neoprene or non-soluble plastic.
Eye Protection: Chemical splash goggles. Provide full flow eyewash station.
Work/Hygienic Practices: Wash hands before eating or smoking.



SafetyStepTD Traditional & Ramp Up: Complete Systems

Both SSTD Systems are comprised of components that work together to form a paving surface completely unlike other warning pattern surfaces on the market. Unlike pre-cast concrete systems, they are easily applied to existing concrete or asphalt paving. Unlike plastic panels, they are breathable, flexible, and requires no mechanical fasteners. **The Traditional SSTD-Mat System** can easily be cut to fit custom curves and shapes. This Traditional system has the components applied in the field to accomplish the end result. Recommended for long runs; Radius conditions and special cut applications
The Ramp Up system is a factory complete system, where all components are completed prior to reaching the project site. Recommended for single ramp conditions or where two or three mats will go end to end. See your SafetyStep Rep for the best system for your application. Once installed, these systems are tightly bonded to the substrate, become slip-resistant and easy to maintain.

PRODUCT INFORMATION

SYSTEM COMPONENTS

MATERIALS COMPOSITION OF BOTH TRADITIONAL AND RAMP UP SYSTEMS:

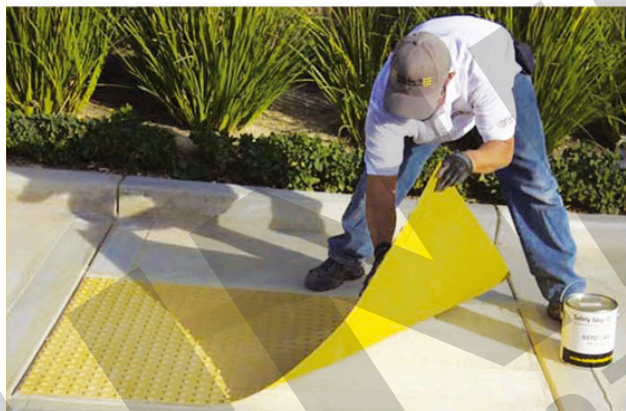
SSTD-Mat: Pre-molded tactile dome sheet composed of fiber-reinforced, polymermodified cement and coated with an acrylic resin emulsion. Mats are 1mm thick with truncated domes 0.9 inches in diameter by 0.2 inches high.

SSTD-589 Bond Coat Adhesive: Water-based acrylic emulsion resin adhesive. 1, and 5 gallon.

SSTD-100 Top Coat : Water-based, pigmented acrylic. 1, and 5 gallon.

SSTD-1250 Clear Finish Sealer: Water-based, clear, acrylic sealer. 1, and 5 gallon.

SSTD TEXTURE:SKID RESISTANT SILICA

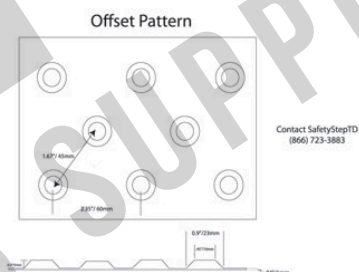
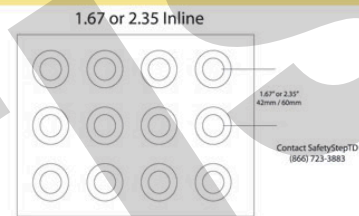


PATTERNS & SIZES:

MAT PATTERNS: Inline (Square) Pattern: 1.67 inches on center each way. Wide Inline (Square) Pattern: 2.35 inches on center each way. Offset (Staggered) Pattern: 1.67 inches on center on the diagonal.

Traditional Sizes - 2' x 10' & 3' x 10'

Ramp Up Sizes - 2' x 4', 2' x 5', 3' x 4', 3' x 5'. Custom sizes available.



PRODUCT INSTALLATION

Please see manufacturer's specific installation guide, either in print or in downloadable format at company website: www.SafetyStepTD.com

PROTECTION:

Protect applications from construction, vehicular traffic, and water for 24 hours. Application may be opened to light foot traffic within 1 hour of installation (May vary with weather conditions).

MAINTENANCE INSTRUCTIONS:

Most stains can be removed with TSP, a brush and water. Pressure wash area as needed. Re-coat with pigment coating and clear coating every 3-5 years or as required.

TECHNICAL SERVICES AVAILABLE:

Guide specifications available for download Federal and state guidelines for warning surfaces available on the web site. Design assistance available by phone or email. 1725 Howard Place Redlands, CA 92373 (866)723-3883 hq@safetysteptd.com www.safetysteptd.com

DISCLAIMER

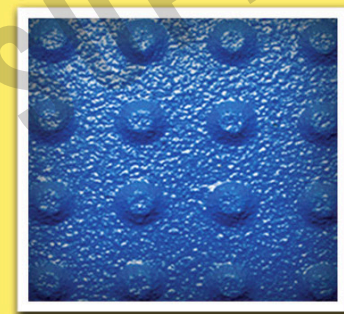
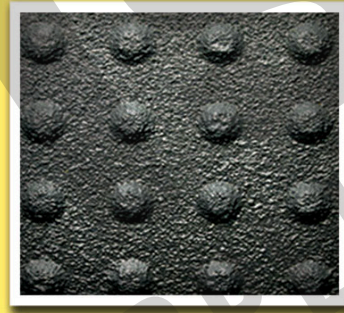
SafetyStepTD is not responsible for any misuse of material or improper installation. Also not responsible for the ADA compliance of installations. Installations should be in compliance with all ADA requirements and to be verified by others.

SafetyStepTD Truncated Dome Tactile Warning Devices

UniFormat: G2030 Pedestrian Paving
MasterFormat: 32 17 26 Tactile Warning Surfacing

PIGMENTED COLORS:

Standard Colors: Yellow, Red, Blue, Black, Dark Gray, and Light Gray.
Custom Colors: Available for installations over 300 sf.



866.723.3883

WWW.SAFETYSTEPTD.COM

