



## Architectural Concrete Chemicals

223 West Hampton Avenue

Capitol Heights, MD 20743

Tel (301) 336-9300

Fax (301) 336-6597

Distributed By:

**UNITIS**

CONTRACTOR SUPPLIES

San Diego: 1-858-332-2133

El Cajon: 1-619-270-7100

Buena Park: 1-714-522-0055

Corona: 1-951-231-9700

[www.unitisonline.com](http://www.unitisonline.com)

# ACC Top Face® Surface Retarders

**PRODUCT DESCRIPTION:** ACC Top Face® Surface Retarders are water-based, polymerized high performance top surface retarders which do not require time consuming and costly covering for protection. They are available in 11 grades from a light sand wash finish to a full exposure of a 1" aggregate. See the grade selection chart on the back for proper selection for your application.

**AREA OF APPLICATION:** Perfectly suited for cast-in-place flatwork as well as the top surface of precast panels. ACC Top Face® Retarders provide a wide variety of effects due to the comprehensive range of grades within the line allowing for multiple finishes on the same concrete or within the same precast panel.

**DIRECTIONS:** Thoroughly mix before application. Screed concrete flat and finish as normal. When producing the micro finishes this process may require multiple passes using both floats and trowels to create a smooth and tight surface to achieve the desired results. After proper finishing apply the appropriate Top Face® Surface Retarder after the evaporation of the initial bleed water. Apply using a low-pressure garden type pump sprayer (plastic preferred) at the rate of 175-300 sq.ft./gal. until a hiding coat is achieved. The retarder is best applied using a .5-1.0 gpm spray tip. Once dry, ACC Top Face® Surface Retarders provide intermittent rain protection and do not require additional covering to ensure performance and reduce surface crusting. **If constant rain is expected use ACC Rain Shield a pigmented polymer based liquid sprayed over the Surface Retarder when dry for the ultimate in protection. Always prepare a test sample to determine the proper grade for the desired effect. Test samples should always simulate jobsite conditions as well as mix designs, washing intervals and all procedures to be used during the project.**

**TECHNICAL DATA:** Water-Based; all additives are non-hazardous and completely biodegradable. VOC Content – National Volatile Organic Emission calculation 6 g/L/ 0.05 lb./gal.

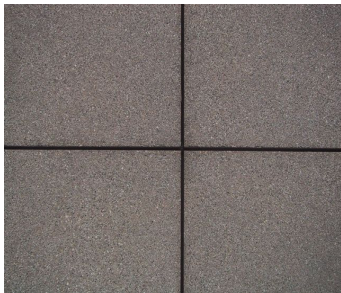
**SHELF LIFE AND STORAGE:** Five years from manufacturing date in closed original container. Keep from freezing.

**PACKAGING:** 5-gal. plastic pails, 55-gal. drums, 275-gal. totes

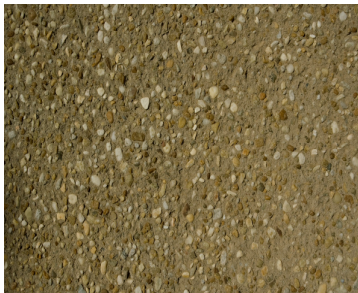
**SAFETY:** Water-based, non-toxic VOC compliant in all jurisdictions including the SCAQMD.

<b><u>FINISH TYPE</u></b>	<b><u>GRADE SELECTION &amp; COLOR</u></b>			<b><u>EXPOSURE</u></b>	<b><u>AGGREGATE SIZE</u></b>
<b>Micro Finish</b>	Xtra-Lite	Lt.Violet	(03)	Medium Acid Exposure Sand Finish exposure Lite Sand Blast	Sand Sand !.8-1/4"
	Sand	Lt.Blue	(05)		
	Lt. Blast	Yellow	(15)		
<b>Sandblast Finish</b>	Med.	Beige	(25)	Medium sandblast Deep sandblastt Full Depth Sm. Agg	1/4 – 3/8" Agg. 3/8 - 1/2" Agg. 3/8" Graded Agg.
	Deep	Canary Grn	(50)		
	Deep	Blue	(75)		
<b>Exposed Finish</b>	Small Agg.	Gray	(100)	Sm.-Med. Full Depth Med. Agg. Full Depth Med. – Large Full Depth Large Full Depth Xlarge Full Depth	3/8" – 1/2" Agg. 1/2" Agg. 5/8" Agg. 5/8 – 3/4" Agg. 3/4 - 1" Agg.
	Medium Agg.	Pink	(125)		
	Large Agg.	Green	(150)		
	Large Agg	Salmon	(200)		
	Xlarge Agg..	Orange	(250)		

**Micro Finish Series**



**Sand-Blast Finish Series**



**Exposed Finish Series**



**\* Note:** When using the Lite Finish in the Micro Series it is generally better to remove the retarder the same day for best results or generally within 8-12 hours of finishing in warm weather.